

試驗報告

報告編號：KB-19-11566
C-19-24323

頁數：1 OF 2
報告日期：108年11月21日

委託單位：博宇德工程股份有限公司
 樣品名稱：尼龍片、PP膜、橡膠墊
 取樣人員：博宇德工程股份有限公司(曾穎立)
 送驗人員：博宇德工程股份有限公司(曾穎立)
 收件日期：108年11月19日
 試驗日期：108年11月19日~108年11月21日
 備註：1.以上資料由顧客提供(收件及試驗日期除外)
 2.除非另有說明，此報告結果僅對測試之樣品負責
 未經本公司事先書面同意，此報告不可部分複製
 3.下述報告內容標示#處由顧客提供

試驗結果：

1. 參考 CNS 12611(2011)

試樣編號	1	2
破壞位置	B	B
黏著強度(kgf/cm ²)	5.1	5.9
黏著強度(N/cm ²)	50.3	57.7

註：破壞位置與符號之關係表：

符號 破壞位置
 G 墊底材料
 GA 墊底材料與接著劑之界面
 A 接著劑
 AB 接著劑與PP膜之界面
 B PP膜

2. 參考 CNS 12611(2011)

試樣編號	1	2
破壞位置	B	B
黏著強度(kgf/cm ²)	6.5	6.6
黏著強度(N/cm ²)	63.5	64.5

註：破壞位置與符號之關係表：

符號 破壞位置
 G 墊底材料
 GA 墊底材料與接著劑之界面
 A 接著劑
 AB 接著劑與橡膠墊之界面
 B 橡膠墊

--- 1 ---

曾穎立
 報告簽署人

本報告若有提供規範值，該規範值僅供參考，合格之判定以委託單位實際要求為準

This document is issued by the Company subject to its General Conditions of Service printed overleaf, available on request or accessible at <http://www.sgs.com/en/Terms-and-Conditions.aspx> and, for electronic format documents, subject to Terms and Conditions for Electronic Documents at <http://www.sgs.com/en/Terms-and-Conditions/Terms-e-Documents.aspx>. Attention is drawn to the limitation of liability, indemnification and jurisdiction issues defined therein. Any holder of this document is advised that information contained hereon reflects the Company's findings at the time of its intervention only and within the limits of Client's instructions, if any. The Company's sole responsibility is to its Client and this document does not exonerate parties to a transaction from exercising all their rights and obligations under the transaction documents. This document cannot be reproduced except in full, without prior written approval of the Company. Any unauthorized alteration, forgery or falsification of the content or appearance of this document is unlawful and offenders may be prosecuted to the fullest extent of the law. Unless otherwise stated the results shown in this test report refer only to the sample(s) tested.

試驗報告



報告編號：KB-19-11566

C-19-24323

頁數：2 OF 2

報告日期：108年11月21日

試驗結果：

3. 參考 CNS 12611(2011)

試樣編號	1	2
破壞位置	B	B
黏著強度(kgf/cm ²)	5.2	5.7
黏著強度(N/cm ²)	51.3	55.5

註：破壞位置與符號之關係表：

符號	破壞位置
G	墊底材料
GA	墊底材料與接著劑之界面
A	接著劑
AB	接著劑與尼龍片之界面
B	尼龍片

---- oOo ----

本報告若有提供規範值，該規範值僅供參考，合格之判定以委託單位實際要求為準

This document is issued by the Company subject to its General Conditions of Service printed overleaf, available on request or accessible at <http://www.sgs.com/en/Terms-and-Conditions.aspx> and, for electronic format documents, subject to Terms and Conditions for Electronic Documents at <http://www.sgs.com/en/Terms-and-Conditions/Terms-e-Documents.aspx>. Attention is drawn to the limitation of liability, indemnification and jurisdiction issues defined therein. Any holder of this document is advised that information contained hereon reflects the Company's findings at the time of its intervention only and within the limits of Client's instructions, if any. The Company's sole responsibility is to its Client and this document does not exonerate parties to a transaction from exercising all their rights and obligations under the transaction documents. This document cannot be reproduced except in full, without prior written approval of the Company. Any unauthorized alteration, forgery or falsification of the content or appearance of this document is unlawful and offenders may be prosecuted to the fullest extent of the law. Unless otherwise stated the results shown in this test report refer only to the sample(s) tested.

SAMPLE CARD

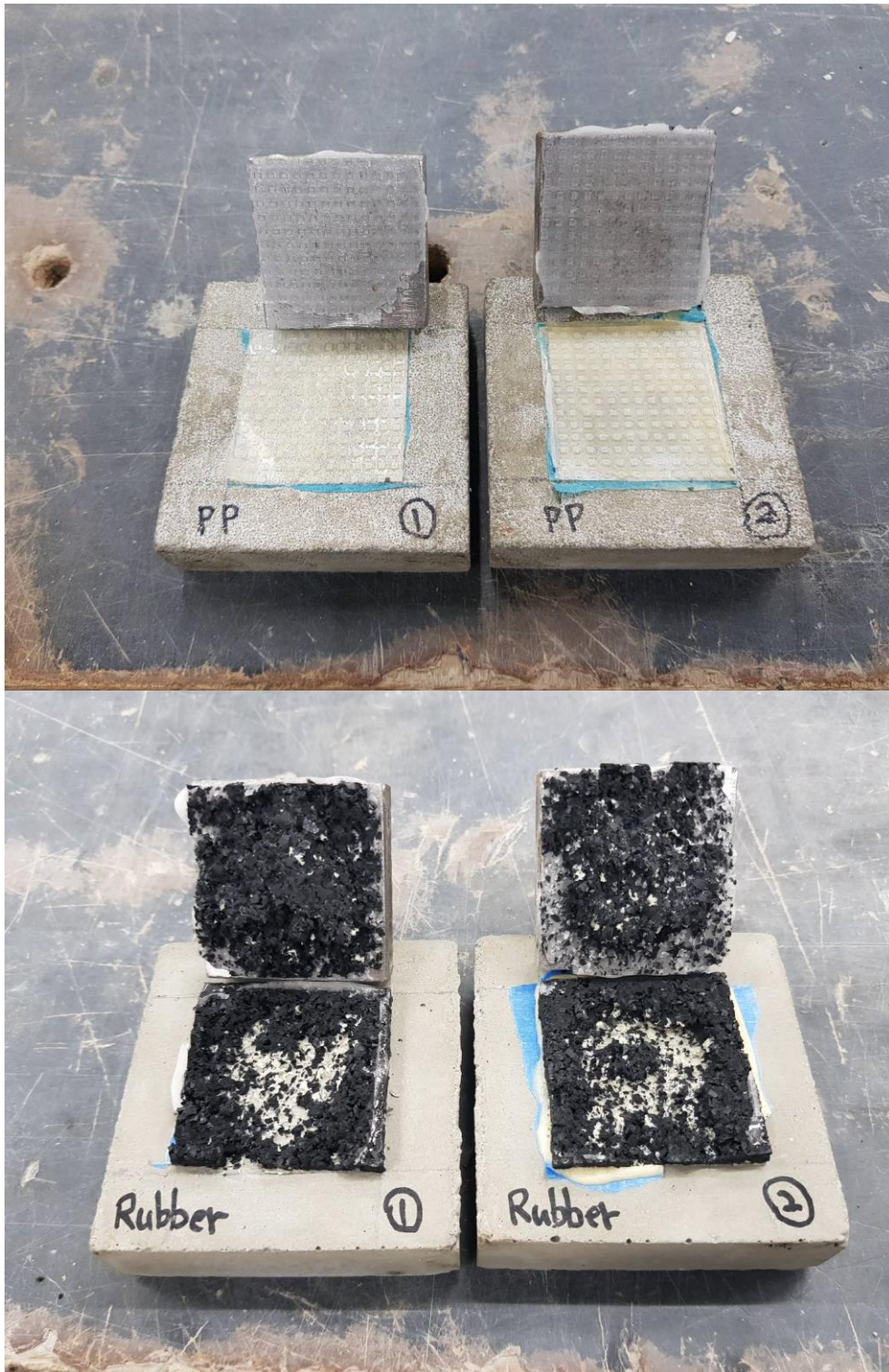
Laboratory Testing · ISO Certification · Inspection
61, Kai-Fa Rd, Nanzih Export Processing Zone,
TW 81170 Kaohsiung County

Tel : (07) 3012121

Fax : (07) 3010126

REPORT NO.: KB-19-11566

PAGE : 1 OF 2





台灣檢驗科技股份有限公司
SGS Taiwan Ltd.

SAMPLE CARD

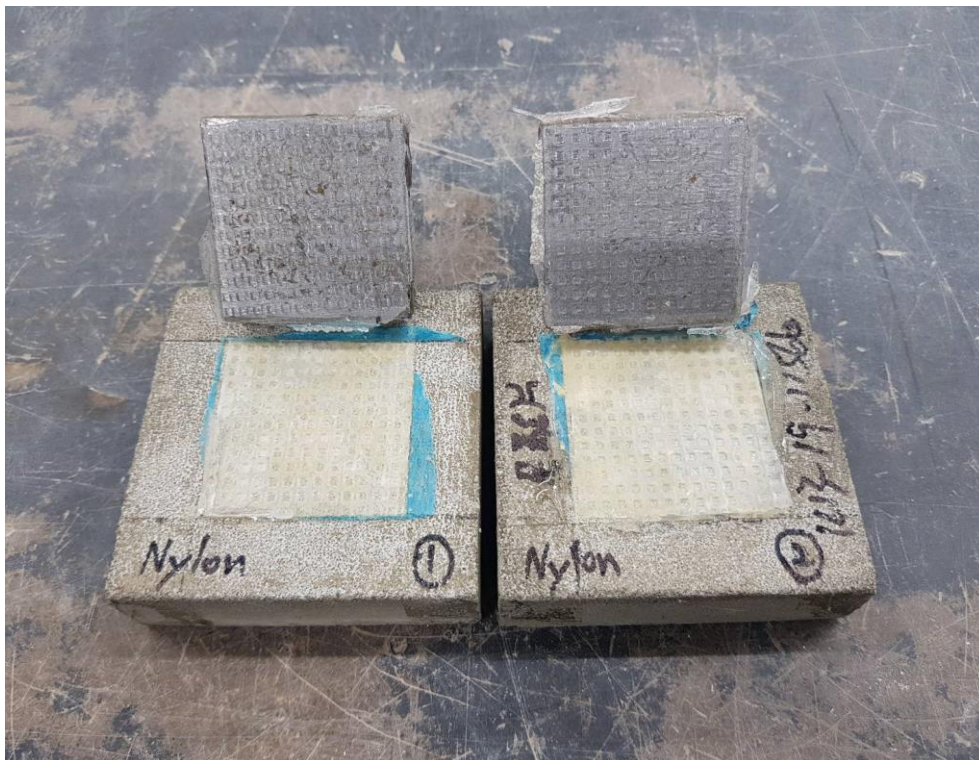
Laboratory Testing 、 ISO Certification 、 Inspection
61, Kai-Fa Rd, Nanzih Export Processing Zone,
TW 81170 Kaohsiung County

Tel : (07) 3012121

Fax : (07) 3010126

REPORT NO.: KB-19-11566

PAGE : 2 OF 2



----- oOo -----